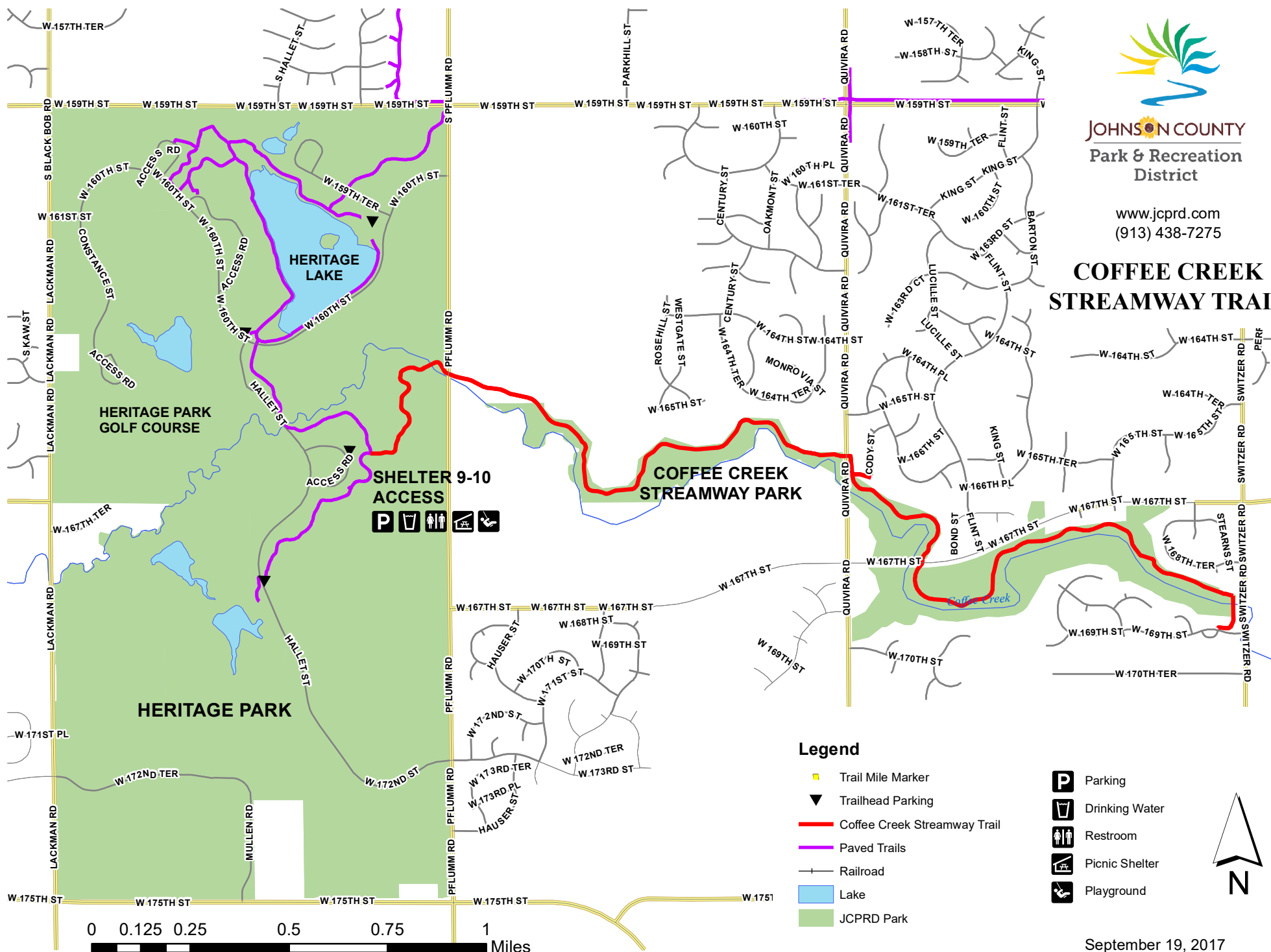




JOHNSON COUNTY
Park & Recreation
District

www.jcprd.com
(913) 438-7275

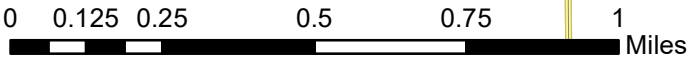
COFFEE CREEK STREAMWAY TRAIL



**SHELTER 9-10
ACCESS**

Legend

- Trail Mile Marker
- Trailhead Parking
- Coffee Creek Streamway Trail
- Paved Trails
- Railroad
- Lake
- JCPRD Park
- Parking
- Drinking Water
- Restroom
- Picnic Shelter
- Playground



September 19, 2017