

Tomahawk Dome Silent Auction Items

ITEM #1

- 1a.
- 1b.
- 1c.
- 1d.
- 1e.
- 1f.
- 1g.
- 1h.



Fan Shaped basketball goals with rims, padding and steel supports
8 available

ITEM #2

- 2a.
- 2b.
- 2c.
- 2d.
- 2e.



Steel volleyball poles including nets and pads
5 sets available

ITEM #3

- 3a.
- 3b.
- 3c.



Steel volleyball poles, no nets, no pads, needs work
3 sets available
 (Volleyball cart is not for sale)

ITEM #4



Sport Court Sports Flooring for 3 vb, 2 bb courts
 Measuring 13,500 sq. ft.
 Bid per square foot - indicate number of square feet desired on bid form

ITEM #5



Generator, gas powered
 Brand: Onan
 12.5kW, V-120/240, Amps - 37

ITEM #6

- 6a.- Gared
- 6b.- Gared
- 6c.- Pro Bound
- 6d.- Pro Bound



Basketball goals
 Brand: 2 Gared
 2 Pro Bound
4 available

ITEM #7

- 7a.
- 7b.
- 7c.
- 7d.



Portable basketball goal stands
 missing backboards and rims
 Brand: Gared
4 available

ITEM #8

- 8a.
- 8b.
- 8c.
- 8d.
- 8e.



Emergency lights
 Need work
5 available, 4 with protective cages

ITEM #9



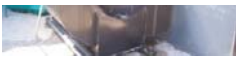
Metal, fan-shaped backboard, no rim

ITEM #10

- 10a.
- 10b.
- 10c.



Electric Dome blowers
 General Purpose Fan
 Size: 333
3 available



ITEM #11



Lobby/Front desk 6'x6'
Bid as entire unit

ITEM #12



External wall, gas heater
COZY, Gravity Direct Vent Wall Furnace

ITEM #13

13a.
13b.



Wall fans/heaters
2 available

ITEM #14



Wall air conditioner
Brand: White-Westinghouse

ITEM #15



Metal desk, 2 drawers

ITEM #16



Wooden desk needs work

ITEM #17



Metal desk with 2 cabinets and 4 drawers, needs work

ITEM #18



Plastic, 2 drawer rolling file cabinet

ITEM #19



Metal, 3 drawer rolling file cabinet

ITEM #20

20a.
20b.
20c.
20d.



Flourescent light fixtures
4 available

ITEM #21



Cash Register
Brand: ROYAL
Needs Keys

ITEM #22

22a.
22b.



Older cash registers, need work
Brand: HAGIN SWEDA
Brand: LITTON SWEDA
Needs Keys
2 available

ITEM #23

23a.
23b.



Ceiling fans, 36" blades
2 available

ITEM #24

24a.
24b.



Ceiling fans, 18" blades with center light
2 available

ITEM #25

25a.- 90 gal
25b.- 40 gal



Water heater - 90gal, gas
Brand: STATE SELECT
Water heater - 40gal, gas
Brand: STATE SELECT

ITEM #26

26a.
26b.



Hanging, gas heater
Brand: MODINE MANUFACTURING COMPANY
60,000 BTU
2 available

ITEM #27



Taraflex synthetic athletic flooring
11,500 sq. ft.
19 - 6'x102', sections
Bid per square foot - indicate number of square feet desired on bid form
Indicate number of square feet desired on bid form

ITEM #28

28a.
28b.



Scoreclock, needs work
Brand: FAIRPLAY
Dimensions: 26"x16"
2 available

ITEM #29



Candy vending machine

ITEM #30



Illuminated exit sign

ITEM #31



Industrial vacuum cleaner, needs work
Brand: KENT

ITEM #32



Plastic chairs
Bid per dozen
1 dozen available

ITEM #33

33a.
33b.



Wall mount water fountains
Brand: HALSEY-TAYLOR
2 available

ITEM #34

34a. - section of 4
34b. - section of 2



Bathroom stalls
Stalls: 7'x3'x4.75', Doors: 5'x2'
a. - Stalls grouped in a section of 4 needing an outside wall to serve as a side
b. - Stalls grouped in a section of 2 needing an outside wall to serve as a side

ITEM #35

35a.
35b.
35c.
35d.
35e.
35f.

Toilet 6 available

ITEM #36

36a.
36b.

Urinal 2 available

ITEM #37

37a.
37b.



Single roll toilet paper dispensers
Brand: Jofel
2 available

ITEM #38

38a.
38b.
38c.



Double roll toilet paper dispensers
Brand: Fort Howard
3 available

ITEM #39

39a.
39b.



Paper towel dispensers
2 available

ITEM #40

40a.
40b.



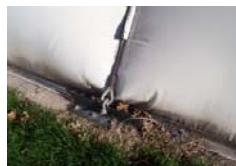
Counter top with 2 sinks
2 available

ITEM #41



Tensor Dome Fabric Material
more than 40,000 sq. ft. available
Bid per square foot - indicate square feet desired on bid form

ITEM #42



16, 150' steel cables
Bid per each 150' section - indicate quantity desired on bid form

ITEM #43



Angle Iron, 32 pieces
length - 2'
width - 4"
height - 5.5"
thickness - .75"
Bid per piece

ITEM #44



Angle Iron, 92 - 100" pieces
Each section dimensions
length - 100"; width - 3.5";
height - 3"; thickness - .5"
Bid per piece

ITEM #45



480' of fencing
10' High
2 double door gates
1 single door gate
Bid as an entire unit

ITEM #46



1.5 million BTU heater
Brand: STERLING ALTON APPLIED AIR

ITEM #47

47a. - double door
47b. - single door
47c. - single door



Steel Emergency Exit Doors
1 double door set available
2 single door sets available

ITEM #48



Metal Entrance doors

ITEM #49



Metal net poles
15' long
1.75" diameter
Bid per pole - indicate quantity desired on bid form
10 available

ITEM #50



Light ballasts for 1000W-m47 or 436 lamps
Brand: ADVANCE TRANSFORMER CO.
Bid per ballast - indicate quantity desired on bid form
40 available

ITEM #51

51a.
51b.
51c.
51d.



Metal referee stand
Overall Height - 7.5'
Platform Height - 4'
4 available

ITEM #52



Revolving Door
Brand: KIRK & BLUM MFG. CO.

ITEM #53



Ceiling Wood Timbers
Metal brackets



Bid per entire roof unit

ITEM #54

54a.
54b.



Overhead garage doors
9'x7.5'
2 available

ITEM #55



Water pressure regulator
Brand: WATTS REGULATOR
25-75 psi

ITEM #56



1/2" copper piping
Bid per linear foot
Indicate linear feet desired on bid form

ITEM #57

57a.
57b.
57c.



Cash Register
Sharp XE-A302
Needs Keys
Poor Condition
3 available

ITEM #58

58a.
58b.
58c.
58d.
58e.
58f.
58g.



Cash Register
DataSym Model 2010
Needs Keys
Poor Condition
7 available



ITEM #59

59a.
59b.



Cash Register
DataSym 3000 Series
Needs Keys
Poor Condition
2 available

ITEM #60

60a.
60b.



Cash Register
Samsung Model 2010
Needs Keys
Poor Condition
2 available

ITEM #61

61a.
61b.
61c.



Receipt Printer
Samsung
Poor Condition
3 available

ITEM #62



Tabber



Pitney Bowes 1863

ITEM #63



1988 Dodge Van
Does not run
130,307 miles

ITEM #64



1990 Chevy Pick Up
Does not run
60,650 miles

ITEM #65



1999 Dodge Ram 1500
Needs new transmission
135,161 miles

